



Charleston Area Medical Center/West Virginia University (Charleston Division)



Morehouse School of Medicine



Jamaica Hospital Medical Center



Nassau University Medical Center

## APA Honors Platinum-Level 100% Club Members



Congratulations to the psychiatry residency programs that are Platinum-Level members of APA's 100% Club. The 100% Club was established to encourage residents throughout the United States and Canada to join APA and to do so with other trainees in their programs.

The Platinum Level is the highest level of membership in the 100% Club—these are programs that have been at the 100% Club Gold Level for five consecutive years. Gold Level programs are those whose residents are all APA members.

The other levels are Silver Level: programs that have 90 to 99 percent of their residents as APA members; and Bronze Level: programs that have 80 to 89 percent of their residents as APA members.

"I want to thank the residency training directors for emphasizing the benefits of APA membership to their trainees and supporting their efforts to join," said APA CEO and Medical Director Saul Levin, M.D., M.P.A. "The future of psychiatry depends on the outstanding men and women in our training programs today. That so many of our best and brightest are dedicated to their profession by being involved in APA gives us assurance that psychiatry's future is strong indeed."

Psychiatry residents and residency training directors should watch their mail for APA's resident-fellow member membership brochure and the 100% Club informational flyer. Residency programs whose residents are enrolled by October 31 will obtain or maintain 100% Club status.

For more information, send an email to Claire Van Wagner of APA's Membership Department at [cvanwagner@psych.org](mailto:cvanwagner@psych.org).

### Platinum Level

- \$200 APA Publishing gift certificate for the residency program

- Special gift for each resident

- Five-year program participant recognition plaque

- Recognition in *Psychiatric News* and on the APA website

### Gold Level

- \$100 APA Publishing gift certificate for the residency program

- Special gift for each resident

- Recognition certificate for residency program

## New Benefits Announced!

The benefits of 100% Club membership have been revamped for the 2016-2017 academic year. They have been designed to support the educational and career-development needs of psychiatry residents and build a collaborative community of psychiatric programs. More information is posted at [psychiatry.org/residents/100-club](http://psychiatry.org/residents/100-club).

### Resident Benefits

- SET for Success, which features more than 60 free courses on the APA Learning Center on APA's website
- A special practice resource gift
- Priority access to new learning formats on the APA Learning Center
- Priority access to moderator positions at the Annual Meeting and IPS: The Mental Health Services Conference (includes reimbursement for meeting registration)

### Program director benefits

- Access to SET for Success courses (including free CME credit)
- A special practice resource gift
- Welcome kits for incoming chief residents
- Exclusive to Platinum Level: on-site grand rounds with an APA leader/expert

### Community Benefits

- Recognition in *Psychiatric News*
- Recognition certificate for the residency program
- Opportunity to showcase program highlights in *Psychiatric News*
- Access to opportunities and events to engage with other programs

- Recognition in *Psychiatric News* and on the APA website

### Silver Level

- \$50 AAPA Publishing gift certificate for the residency program

- Recognition certificate for residency program

- Recognition in *Psychiatric News* and on the APA website

### Bronze Level

- Recognition certificate for residency program

- Recognition in *Psychiatric News* and on the APA website. **PN**

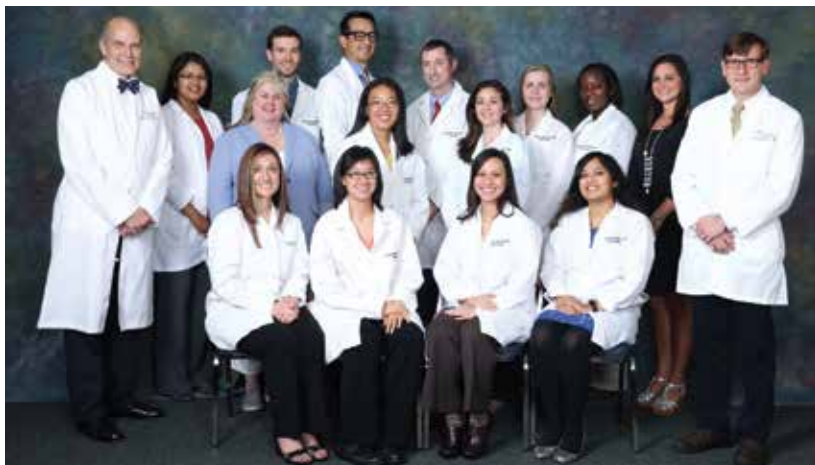




San Mateo County Behavioral Health and Recovery Services



Wake Forest University School of Medicine



University of South Alabama



Medical College of Wisconsin

**100% Club List of Residency Programs for 2015-2016**

**Platinum Level Programs**

- Charleston Area Medical Center/  
West Virginia University (Charleston Division)
- Charleston Area Medical Center/  
West Virginia University (Charleston Division)  
Internal Medicine
- Jamaica Hospital Medical Center
- Medical College of Wisconsin
- Morehouse School of Medicine
- Nassau University Medical Center
- San Mateo County Behavioral Health and Recovery  
Services
- University of South Alabama
- Wake Forest University School of Medicine

**Gold Level Programs**

- Advocate Lutheran General Hospital
- University of Alabama Medical Center
- Albany Medical Center
- Albert Einstein Healthcare Network
- Allegheny General Hospital
- Allegiance Health
- Bergen Regional Medical Center
- Berkshire Medical Center
- Boston University Medical Center
- Brown University (Butler Hospital)
- University of California-Irvine
- Carilion Clinic-Virginia Tech Carilion School of Medicine
- Central Michigan University College of Medicine
- University of Cincinnati Medical Center
- Citrus Health Network Inc. Program
- Cleveland Clinic Foundation
- Community Health of South Florida
- Cooper Medical School of Rowan University

- Creighton University/University of Nebraska  
National Capital Consortium/  
Walter Reed National Military Medical Center
- Delaware Psychiatric Center
- Detroit Wayne County Health Authority
- University of Florida College of Medicine
- Geisinger Health System Program
- Grandview Hospital & Medical Center
- Harvard Longwood Medical School
- University of Hawaii
- Henry Ford Hospital
- Indiana University School of Medicine
- University of Kansas-Wichita
- Kaweah Delta Health Care District
- Larkin Community Hospital
- Louisiana State University-Shreveport
- University of Louisville
- Maimonides Medical Center
- Marshall University School of Medicine
- University of Massachusetts
- Medical University of South Carolina
- Michigan State University
- University of Mississippi Medical Center
- Mount Sinai School of Medicine-Elmhurst
- University of Nevada School of Medicine
- Orange Regional Medical Center
- Palm Beach Consortium
- Pine Rest Christian Mental Health Services
- Providence Sacred Heart Medical Center
- Samaritan Health Services-Corvallis
- Southern Illinois University
- St. Louis University School of Medicine
- Staten Island University Hospital
- University of Tennessee

- Thomas Jefferson University
- University of South Dakota
- University of Toledo
- UMDNJ-New Jersey Medical School

**Silver Level Programs**

- University of Cincinnati Family Medicine/  
Psychiatry Program Hennepin County Medical Center/  
Regions Hospital
- Howard University
- Ponce School of Medicine
- St. Mary Mercy Hospital Program
- University of South Carolina-Greenville
- SUNY Health Science Center at Brooklyn  
(Downstate)
- University of Virginia
- Virginia Commonwealth University Health System
- Wayne State University/  
Detroit Medical Center
- West Virginia University

**Bronze Level Programs**

- University of California-Riverside County
- Creedmoor Psychiatric Center
- Griffin Memorial Hospital
- Loyola University
- Maricopa Medical Center
- Medical College of Georgia
- University of Minnesota
- University of Missouri-Columbia
- University of Nevada School of Medicine (Las Vegas)
- Ohio State University Hospital
- Penn State Milton S. Hershey Medical Center
- Saint Elizabeths Hospital